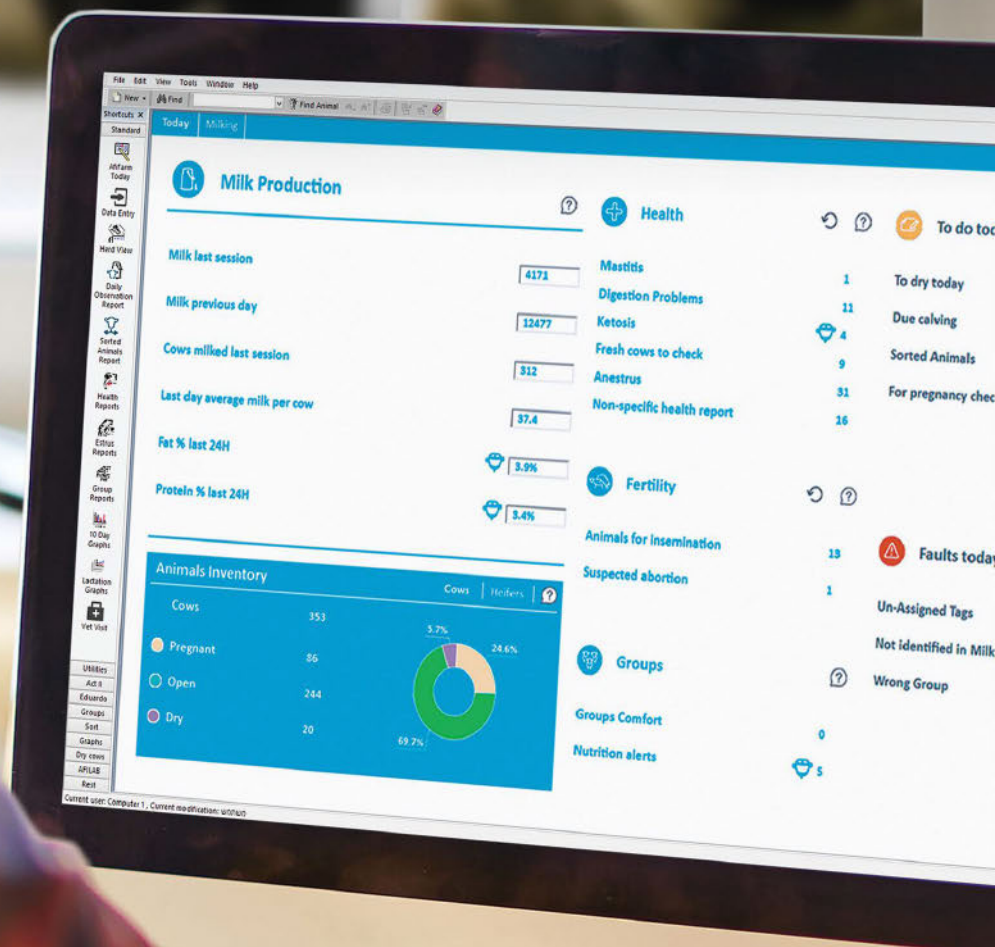


Afimilk Introduces AfiFarm™ 5.3

2019



Index

4-5

Afifarm 5.3 - Intro



6-7

AfiFarm ABC Dashboard



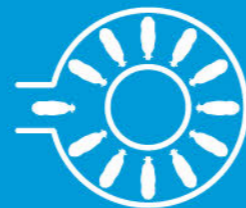
8-11

Mobile Applications



12-13

Rotary Terminal



14-16

New in AfiAct II



17

AfiAct II Calving Alert Service



18-19

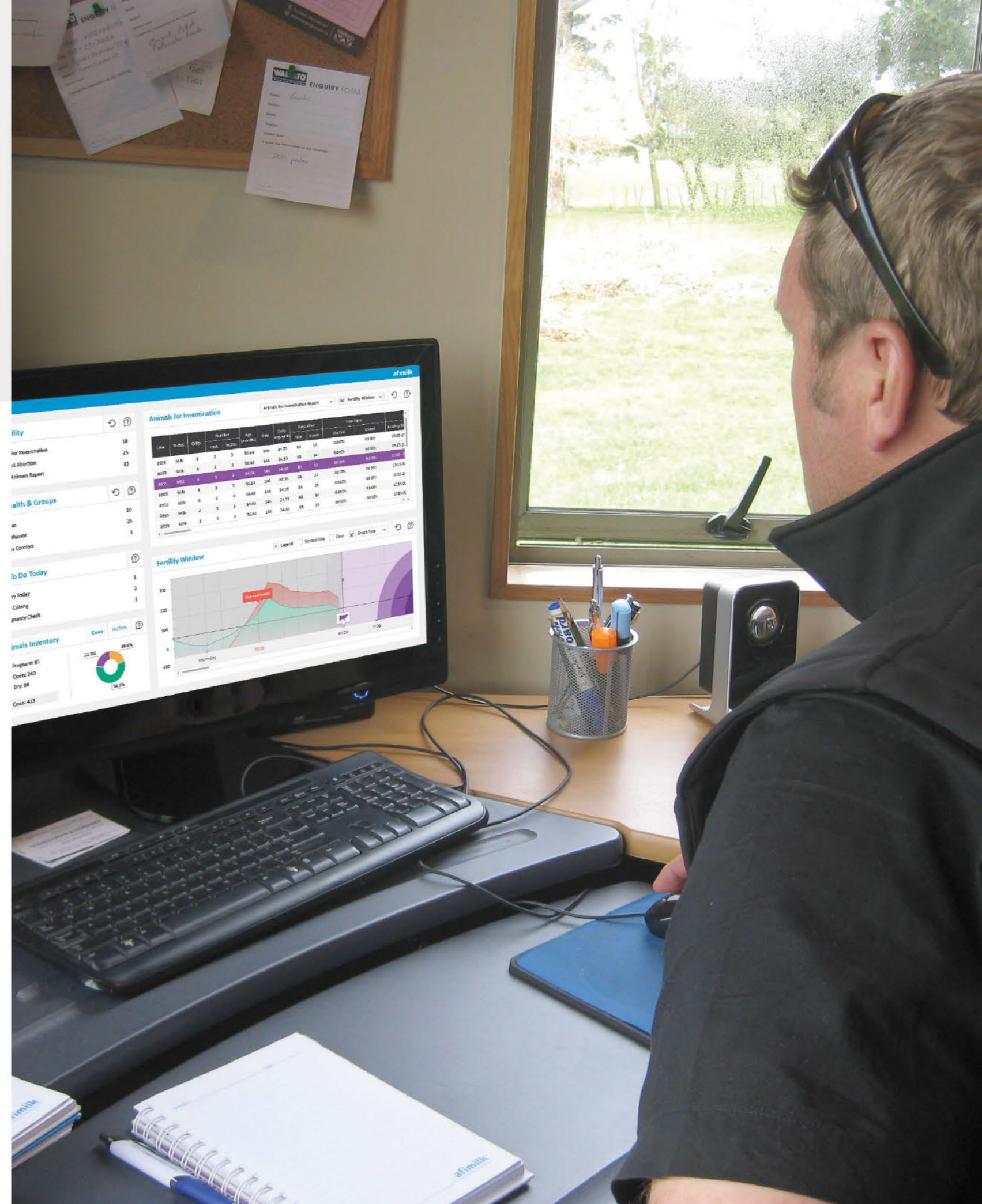
Individual Feeding - Enhanced



To Manage your Vital Knowhow

AfiFarm is one of the most comprehensive, scalable and flexible softwares that were ever developed for management and automation of dairy farms.

With a range of newly developed tools, it is now more friendly, intuitive and powerful than ever.



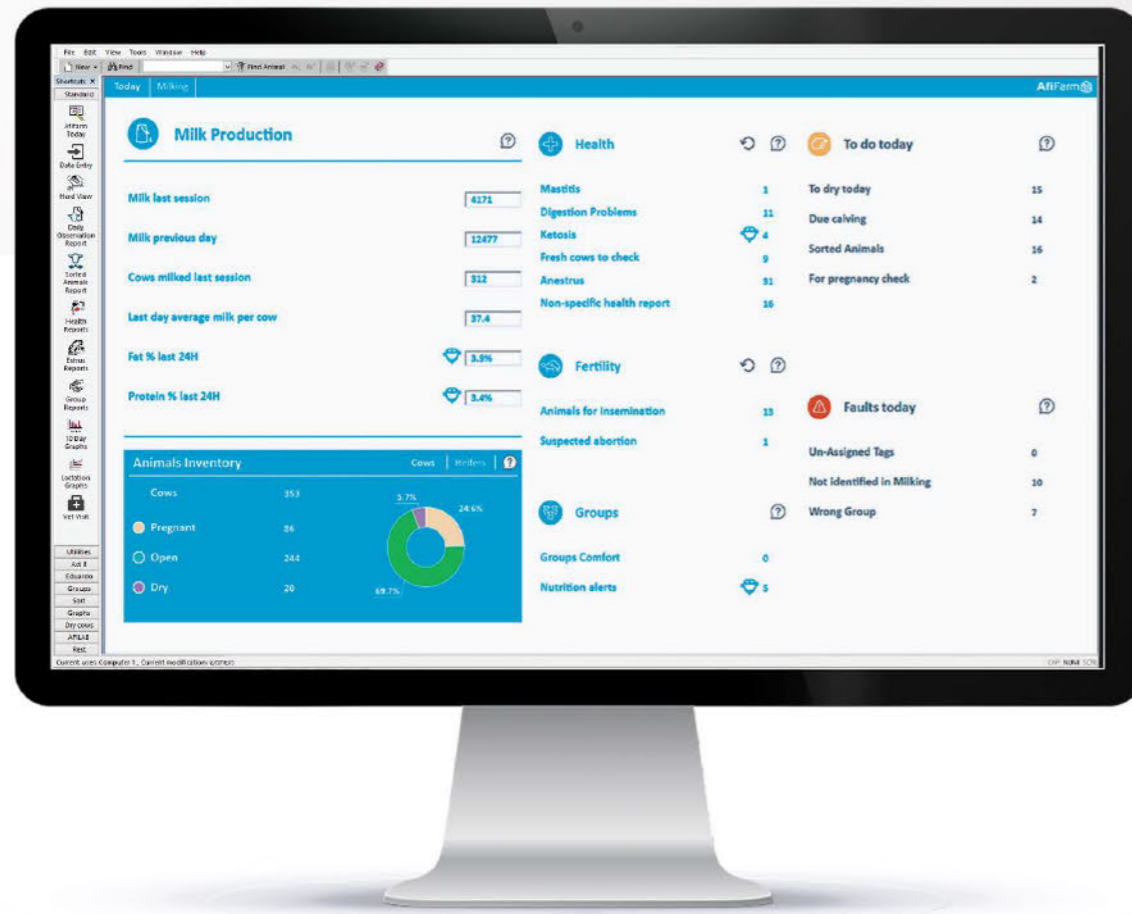
Features and Benefits:

- Comprehensive health management
- Detection of ketosis, mastitis, and digestion problems
- Group wellbeing – automatic alerts on overcrowding, bedding problems, and reduced wellbeing
- Point-on heat detection and fertility management
- Monitoring and analysis of milk production
- Milking efficiency analysis
- Advanced animal sorting

New in AfiFarm 5.3

- AfiFarm ABC dashboard and new reports
- Reliable Calving Alert Service
- New In-Line Milk Lab applications
- Afi2Go Pro, a new mobile app
- Mobile notifications for calving and heat detection
- Rotary terminal with touchscreen
- The best integration with DC305 on the market

Serious management just got easier!



Meet AfiFarm ABC, your new farm dashboard

- Improved usability, always-on homepage
- All key management functions at your fingertips
- Always updated - reports will open in a snap, even in the largest mega-farms

What's in it?

- Current status - inventory and production
- Attention lists - powerful system reports from Afimilk's experts
- Action lists - tasks to perform, problems to solve

AfiLab and AfiAct-II enabled artificial intelligence: **NEW** health, fertility and nutrition monitoring



Powerful set of new system reports developed by Afimilk experts

- Research team of mathematics and physics PhDs, cow-specialized veterinarians and leading epidemiologists
- Decision support - specific indications for diseases & conditions
- Unmatched multi-sensor analysis: milk yield, conductivity, milk components, activity and rest

Specific reports

- Suspected mastitis cows
- Suspected ketosis cows - AfiLab based detection, and risk factors (by AfiFarm)
- Fresh cows to check
- Anestrus cows
- Nutrition alerts (including SARA - Sub-Acute Ruminant Acidosis)
- Suspected abortions

Afi2Go Pro

NEW

The flexibility to be where you're needed most -
with your cows



Everything You Need to Know
At a Glance.

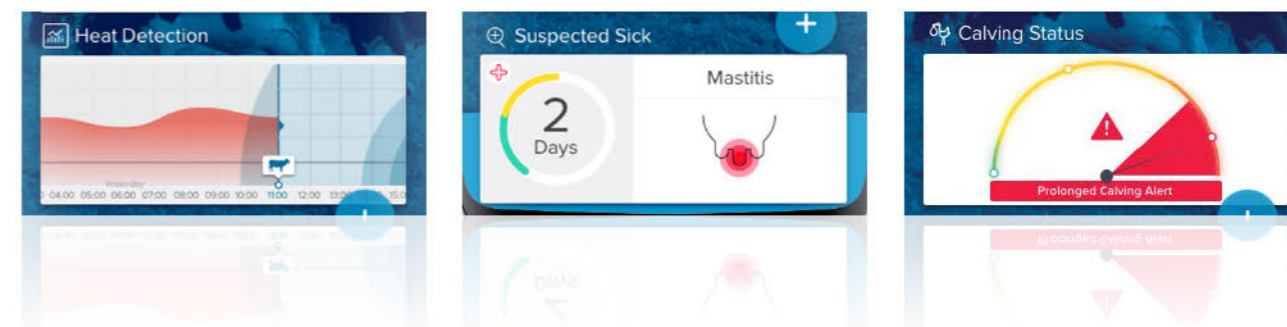
Anything You Need to Do
With a Touch.

Easy-to-access information

- Use a **RFID ear tag** with Bluetooth wand, or manually type her number
- Streamline work with **sorted**, insemination and sick lists
- **Mark cows** and find them later in "my list"
- Information is **synced** in real-time with AfiFarm

Everything you need to know

- **Cow information:** group, codes, milk data, insemination and pregnancy
- **Cow history:** treatments, events
- **Sensor data:** sick, animal in heat, and calving



Everything you need to do

Afi2Go Pro provides on-the-go access to all the functionality you need from your smartphone or tablet - eliminating visits to the office for animal list or for entering data.

Use the app to manage:

- **Tasks:** use lists of animals for insemination, sorting and other procedures
- **Animals:** set codes, move groups, sort or dry
- **Treatments:** vaccinations, diagnostics, drugs, hoof trimming
- **Fertility:** calving, pregnancy check, abortion

Afi2Go Light

Who's that Cow? A simple mobileapp for all employees

Like to give your employees an app, but you're not comfortable with them entering events and making decisions? No problem.

With Afi2Go Light, users get access to cow info but without making any sensitive decisions.

Features and Benefits

- **Cow status:** group, days in milk, pregnancy status, and production
- **Recent events:** group change, vet visit, heat, and insemination
- **One-click sort**
- **Cow ID:** by typing or using RFID ear tag (and a compatible wand)

Farm Notifications App

Stay Alert with our Farm Notifications App

A user-friendly visual inbox for timely notifications on important farm events, for example "animal 4385 – prolonged calving", or "technical problem at the sort gate requires your attention".

Each of the users can select the notification type that suits them, so that we don't bother the vet with technical alerts or send a calving alert to the inseminator.



AfiFarm™ 5.3 Rotary Terminal – The Control Center of Your Rotary Parlor



No need to walk around the deck – you can now see everything from your milker's place!

Intuitive touchscreen-based control pod to help you stay on top of everything that happens in your rotary parlor through:

Statuses: milking session progress, groups milked and groups on the deck, production data, milking progress on the deck

Alerts: cow in wrong group, conductivity (possible mastitis), cluster kick, low yield, canceled ACR, manager codes

Actions: point and send to sort, keep for 2nd rotation

More Features and Benefits

- Pre-installed cabinet with ruggedized PC and built-in 15" touchscreen
- High spec and water proof
- HDMI and USB connectors for external screen or touchscreen (useful for large wall-mount monitors)

AfiAct II - Vital Knowhow in Every Step



AfiAct II and AfiFarm 5.3
Match Made in Heaven

Effective Cow Monitoring and Accurate Animal ID in a Single Package

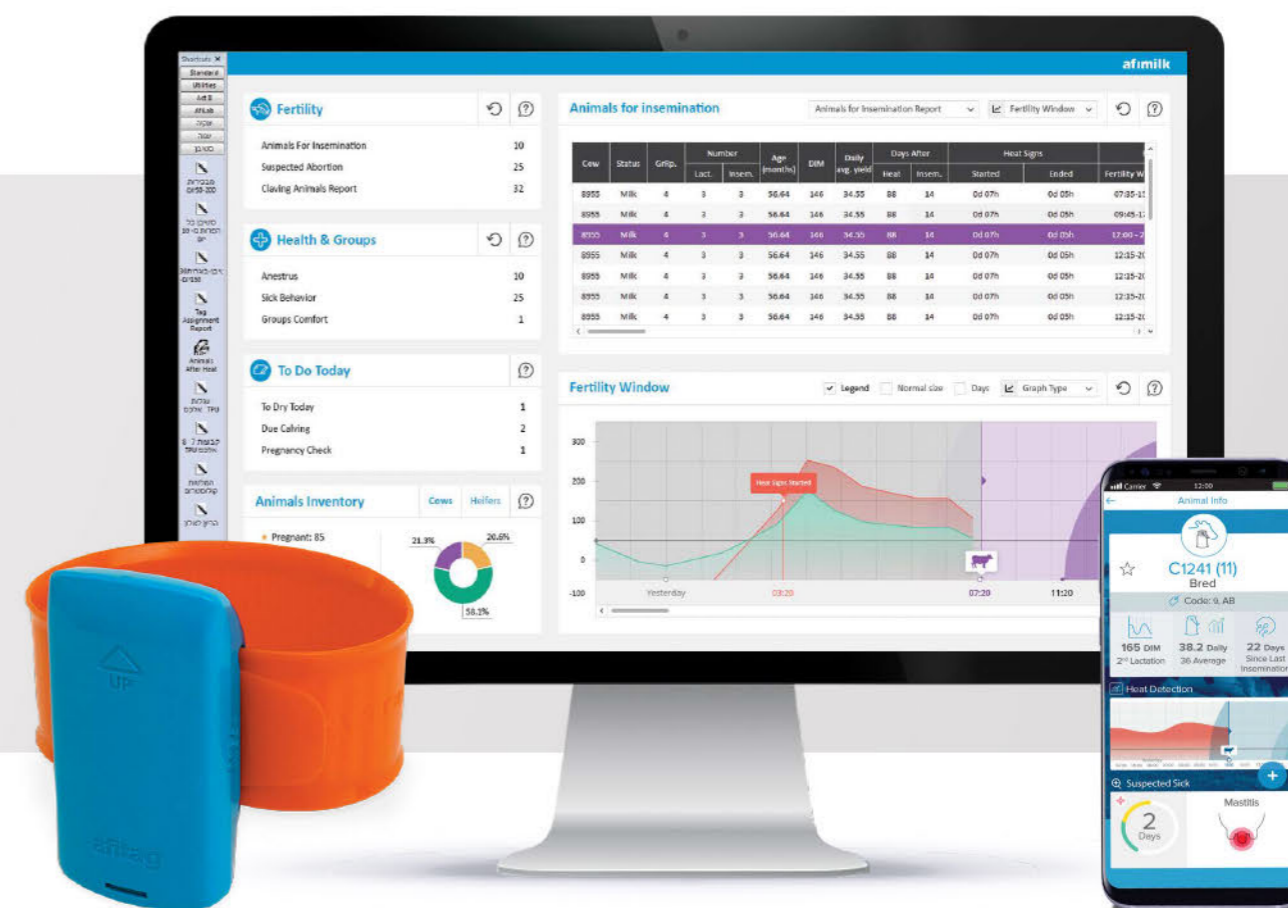
AfiAct II Solution - Your Eyes in the Farm

AfiAct II solution helps you improve your pregnancy rate with accurate and time sensitive, 24/7 heat detection.

The same tag also functions as a powerful tool for accurate identification of the cows in the milking parlor to properly record their production data to right animals.

AfiAct II solution includes:

- Highly-accurate, 24/7 heat detection
- Calving alerts to your mobile
- Monitoring rest and animal comfort
- Wireless, long range transmission
- Long-life batteries (over 5 years)



Cow Monitoring, Parlor, and Herd Management - integrated

An accurate cow sensor is not enough: the farmer needs a decision making tool, that fully integrates with herd management and helps in automation of processes. For example, a good "Animals for Insemination" list will not include cows in voluntary waiting period, and the list for insemination better be sent automatically to a sort gate.

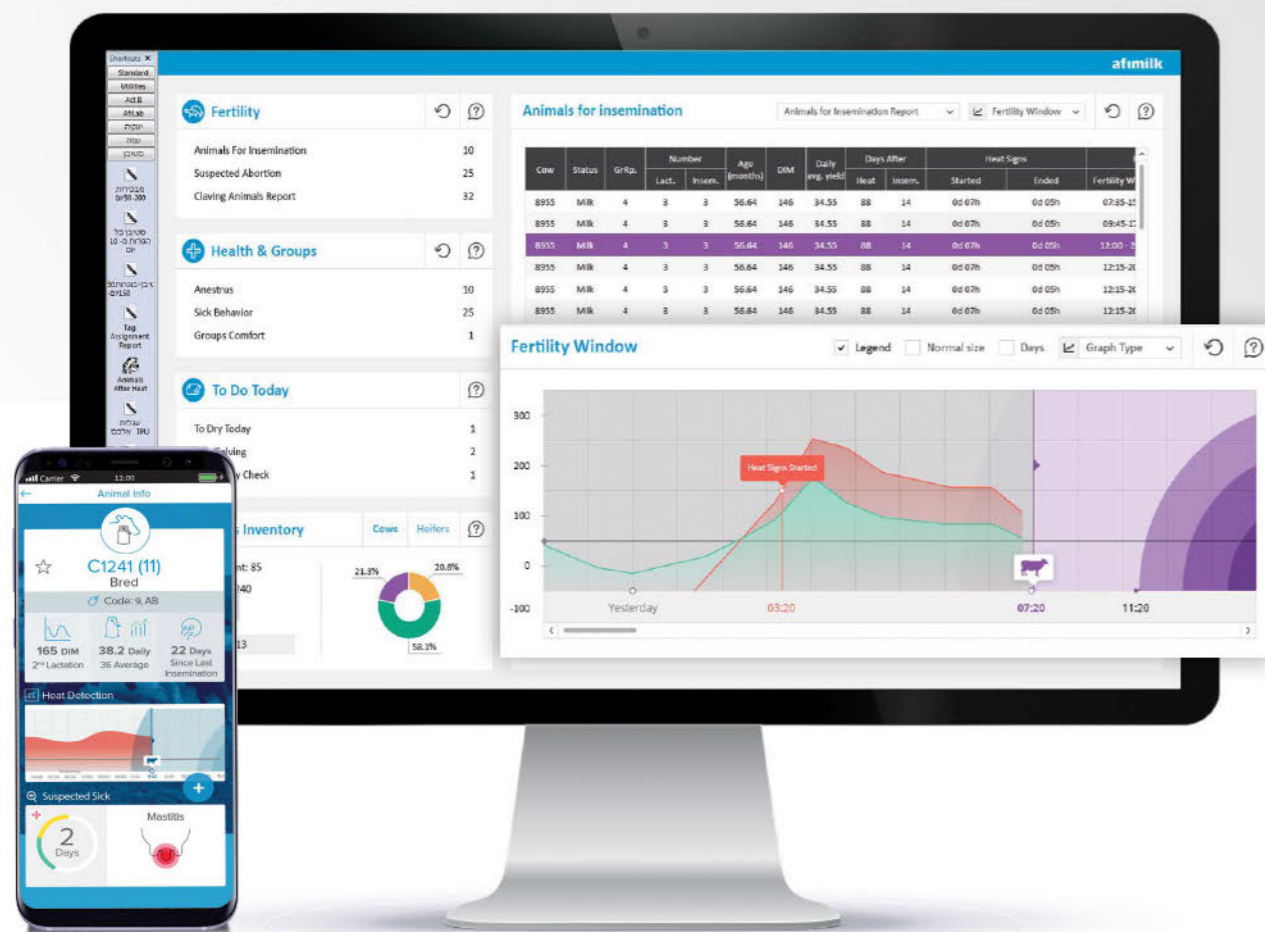
Highlights

- Milking parlor: The cow sensor is also a solution for high quality install animal ID
- Integrated health: data from milk sensors and cow sensors are integrated to a single highly accurate list of sick animals
- Integrated fertility management: AfiFarm software used for controlling voluntary waiting period, pregnancy check, abortion alerts, and insemination
- Adaptation to work protocols: filter animals following group changes, pregnancy checks, and hoof trimming to avoid false alerts
- Integrated animal sorting: smart sensors are used for detection of animals, which require attention. A sort gate helps you find them. And AfiFarm orchestrates it all.

Best timing for inseminations:

NEW

Find out which cows to inseminate – and when



NEW

Calving Alert Service

The determination of calving time is a key factor in ensuring successful calving and optimized treatment - and is often even the determining factor in saving the lives of your calves and cows.

With the AfiAct II calving alert service, you can receive notifications directly to your smartphone just before calving starts, and more importantly, in cases of prolonged calving that often requires intervention.

The AfiAct II Calving Alert Service was successfully proven at large scale, used in hundreds of farms in tens of countries to help farmers save their calves and cows every day.

Not only will AfiFarm help you detect animals in heat and mark them for insemination, it will also indicate what is the best timing of insemination.

- In case the farmer can influence the insemination time - achieve better conception rate
- In case insemination timing is too remote – save money and avoid useless insemination

Features and Benefits

- Fully integrated with Afimilk's Mobile Apps
- Alerts when calving starts (typically 4 hours or less before calving starts)
- Alerts in cases of prolonged calving, for effective intervention in distochia (difficult calving) cases
- Indication of high-risk calving (such as cows after induction)

Requirements

- AfiAct II leg tags (manufactured after January 2016)
- Reader
- WiFi connection
- Smartphone

Individual Feeding Using **AfiFarm™ 5.3**

NEW

Afifarm allows you to strategize, plan, and execute automated feeding programs that optimizes the feed and supplements that each animal receives according to her stage in lactation, pregnancy, yield, and body condition.



Features and Benefits:

- Feed strategy per status: heifers, 1st lactation, late lactations
- 'Special treat': pregnant animals program
- Smart menus: automated policies by days in milk, yield, body weight and body condition score
- Safety mechanisms to avoid over-feeding, or no-feeding, daily maximum and daily minimum
- Control of distribution along the day
- Special Ketosis cows menu – treatment option (empowered by Afilab automatic Ketosis detection)

Highlights



User friendly



In  line
milk lab

Unique applications



Decision support tools



Enhanced cow monitoring



Best large farm tools



Animal wellbeing